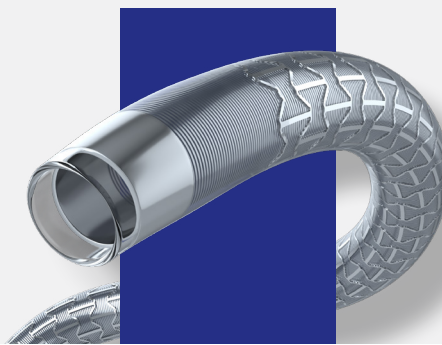




I am Armadillo.

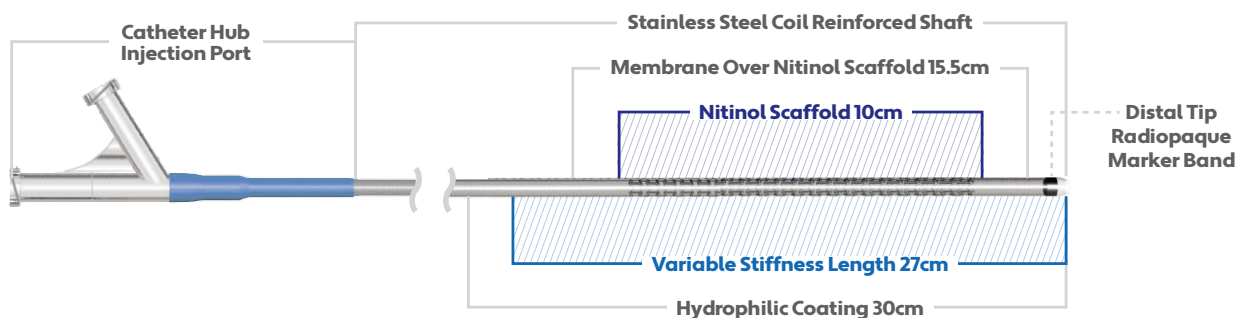
I'm uniquely designed to strike the ideal balance between trackability and support on demand, giving operators the control to transform as we navigate complex neurovascular anatomy.



No matter the access approach, I'm simply leading the way.

Radial or femoral? No problem.

My slick construction enables biaxial access to accelerate delicate interventions and eliminate complexity and cost of conventional tri-axial configurations. I'm a solid option for the patient and a flexible one for the physician.



7F Compatability	Tip Shape Straight	Outer Diameter (OD) 0.095"	Guidewire Compatibility 0.035" - 0.038"	Internal Diameter (ID) 0.072"	Usable Length 95cm, 105cm
----------------------------	------------------------------	--------------------------------------	---	---	-------------------------------------

Components

- Mode Control Syringe
- Peel-Away Introducer
- Luer-Activated Valve
- Dilator

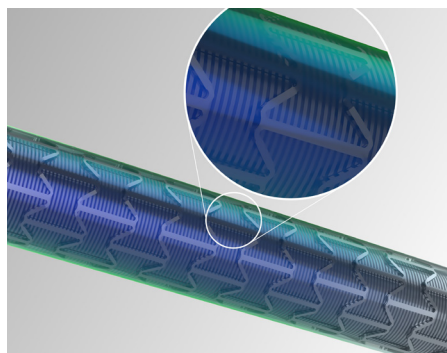
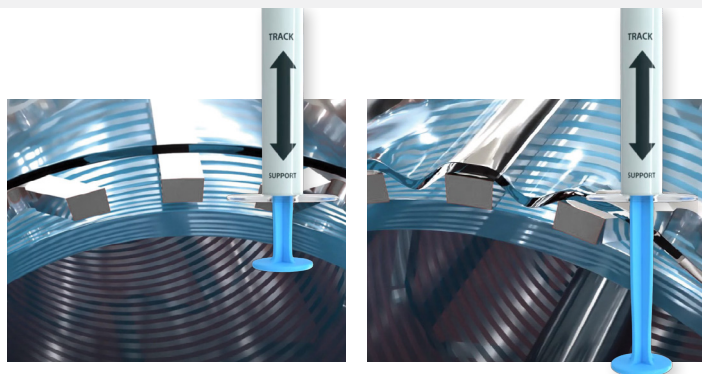
HOW I'M DIFFERENT

I place full control in the palm of your hand.

I'm a first-of-its-kind system featuring proprietary SelectFlex Technology. I give operators the power to seamlessly transform to the challenges of neurovascular access on demand.

Attributes:

- Two modes so operators can switch between tracking and support as needed
- 27-centimeter variable support transition length



HOW I'M DIFFERENT

I'm expertly engineered for a difference you can see and feel.

With my low-profile design, lubricious coating, and inner diameter, I reliably tackle a wide range of neurovascular interventions.

Attributes:

- 0.072" ID and compatible with 0.035-0.038" guidewires
- 10cm of nitinol scaffold allows swift navigation to desired location and then provides unmatched stability
- 30cm of hydrophilic coating to minimize vasospasm during procedures

HOW I'M DIFFERENT

I'm a one-and-done frontline solution.

I deliver the versatility needed to confidently access the smallest of arteries and simplify your workflow.

Attributes:

- SelectFlex Technology enables a biaxial approach to reduce the need for an intermediate catheter
- Elastically loaded tapered tip for a zero gap transition
- Dilators for each catheter length with a luer-fitting connection for secure and confident entry without push back



Product Code	Description	Length	Variable Stiffness Length
SF7072-095-27-30	SelectFlex, Armadillo 7F	95cm	27cm
SF7072-105-27-30	SelectFlex, Armadillo 7F	105cm	27cm

We're Q'Apel, a medical technology company that creates solutions. More specifically, we design novel access device technology for vascular interventions and unmet clinical needs. Because in the precious seconds that surround a stroke emergency, clinicians need technology that delivers. That's where we come in.

Get in touch | info@qapelmedical.com | [linkedin.com/company/q-apel-medical](https://www.linkedin.com/company/q-apel-medical)

©2025. Q'Apel Medical, Inc. All rights reserved. MKT-00621.K

Q'Apel Medical
4245 Technology Drive
Fremont, CA 94538

CALL TO INQUIRE: 510.738.6255

[qapelmedical.com](https://www.qapelmedical.com)